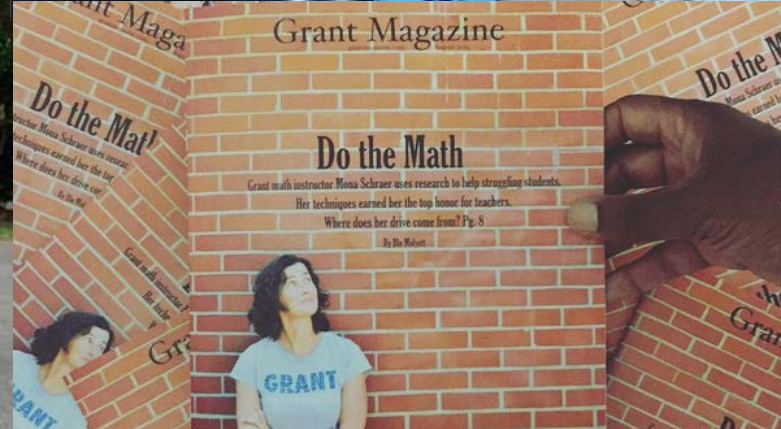


mahlum

Design Advisory Group Meeting 03
Grant High School Modernization
10.08.15





Design Advisory Group Schedule

School Tours	Oct 23	SD Workshop 1*	Jan 09
MP Workshop 1*	Oct 24	DAG 07	Jan 21
DAG 04	Nov 05	SD Workshop 2*	Feb 06
MP Workshop 2*	Nov 07	DAG 08	Mar 03
DAG 05	Nov 19	SD Open House*	Mar 31
MP Open House*	Dec 03	DAG 09	Apr 28
DAG 06	Dec 16		

*Community Focused Meetings

All meetings 5:30-7:25pm except
Workshops 9am-12pm



Agenda

Seattle Tour Info (5 min)

Visual Listening (20 min)

Questions about the Ed Spec (5 min)

Introduction to Programs (30 min)

Spatial Relationships (20 min)

What We Learned (5 min)

Spectrums (20 min)

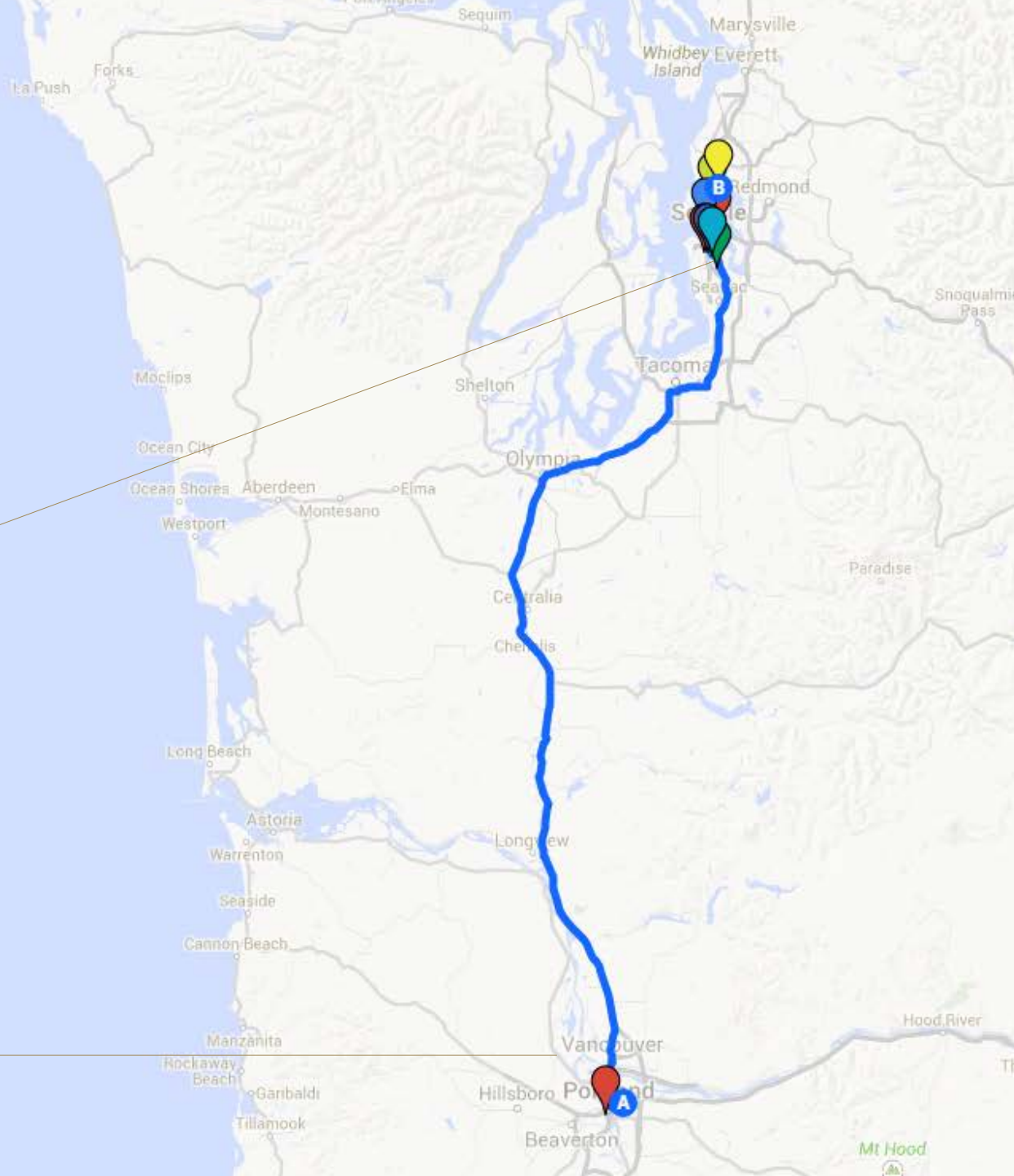
Public Comment (15 min)

Seattle Tour Information:

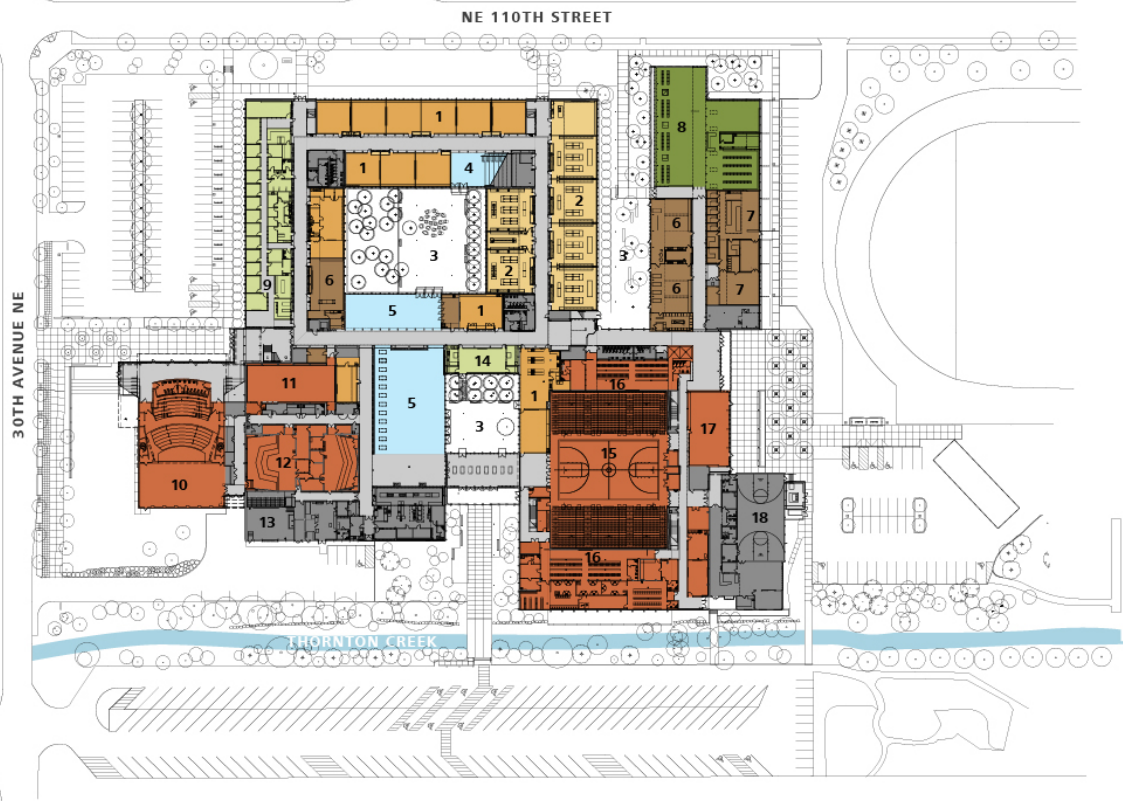
October 23

Nathan Hale High School
Garfield High School
McKinstry Innovation Center
Cleveland High School
Aviation High School

Shattuck Hall, PSU

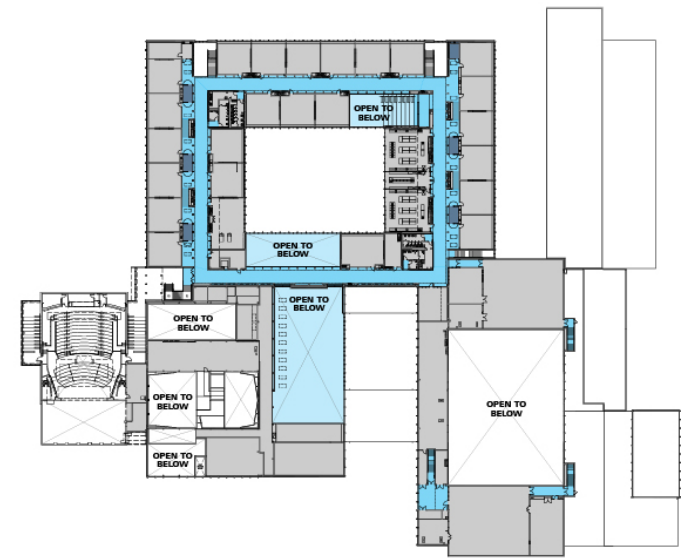
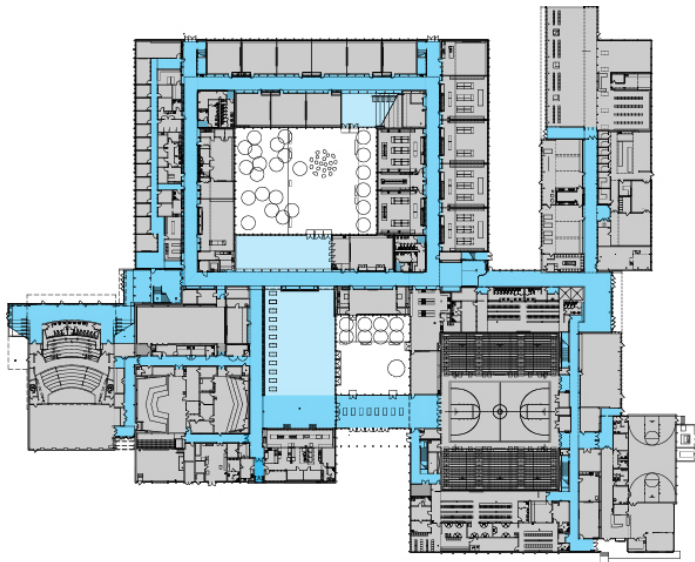


Proposed Tour Stop 1



Nathan Hale High School
Seattle Public Schools

Proposed Tour Stop 1



Nathan Hale High School
Seattle Public Schools

Proposed Tour Stop 1



Nathan Hale High School
Seattle Public Schools

Proposed Tour Stop 1



Nathan Hale High School
Seattle Public Schools

Proposed Tour Stop 1



Nathan Hale High School
Seattle Public Schools

Proposed Tour Stop 1



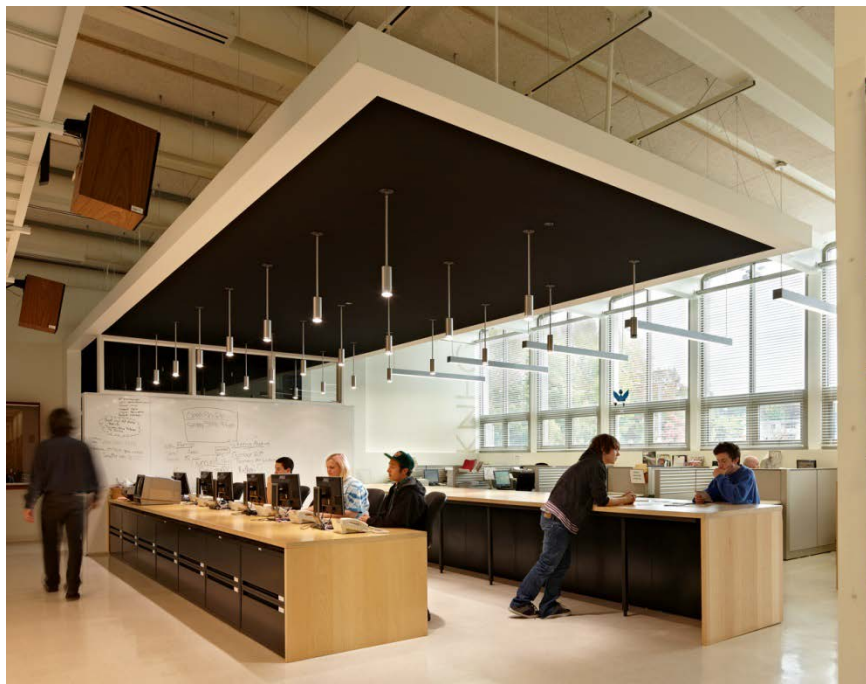
Nathan Hale High School
Seattle Public Schools

Proposed Tour Stop 1



Nathan Hale High School
Seattle Public Schools

Proposed Tour Stop 1



Nathan Hale High School
Seattle Public Schools

Proposed Tour Stop 2



Garfield High School
Seattle, Washington

Proposed Tour Stop 2



Garfield High School
Seattle, Washington

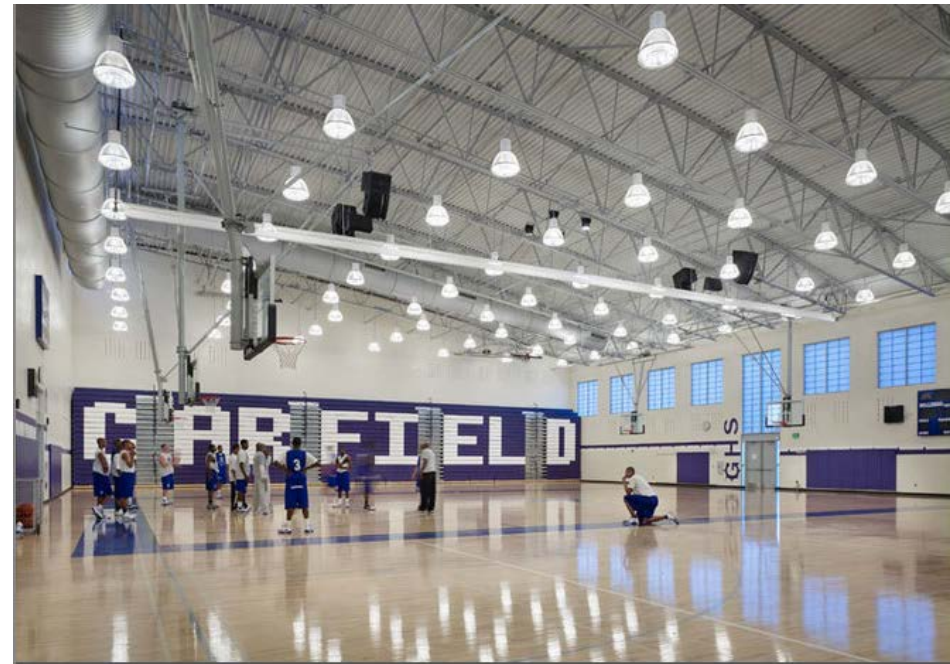


Proposed Tour Stop 2



Garfield High School
Seattle, Washington

Proposed Tour Stop 2



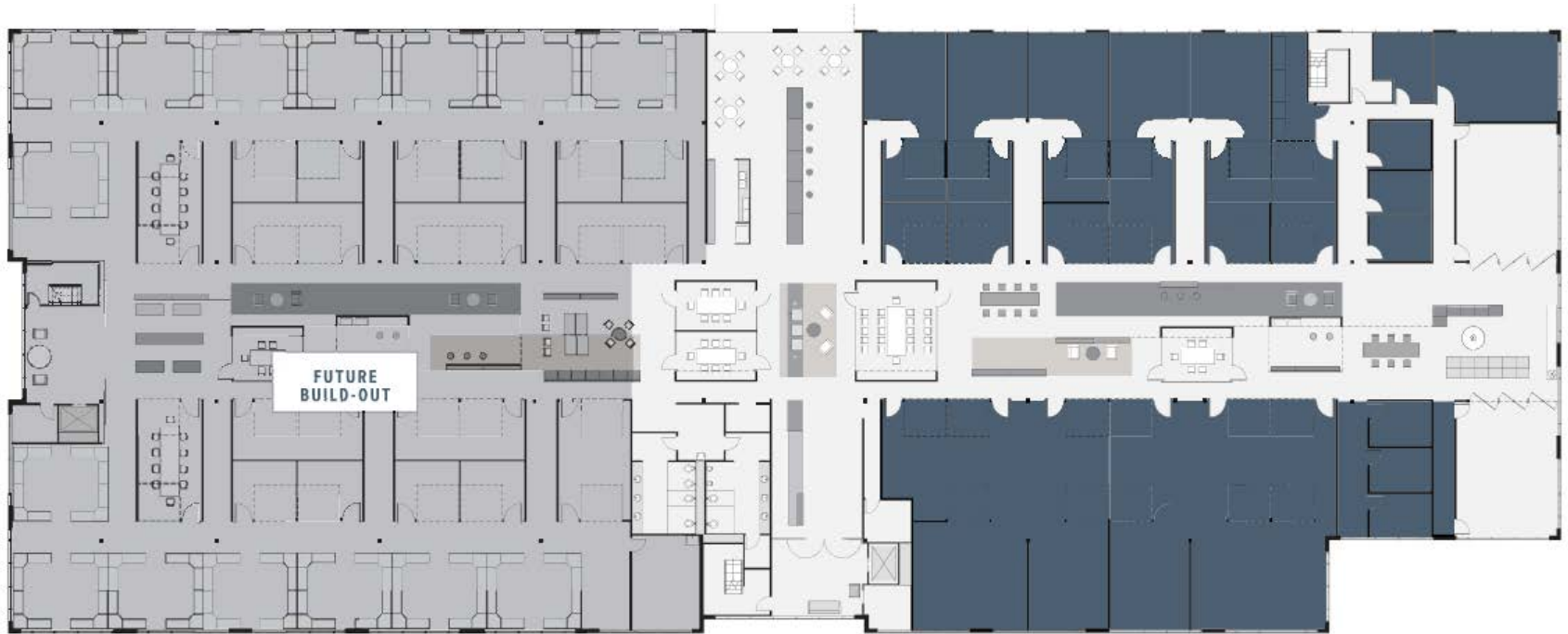
Garfield High School
Seattle, Washington

Proposed Tour Stop 2



Garfield High School
Seattle, Washington

Proposed Tour Stop 3



McKinstry Innovation Center
Seattle, Washington

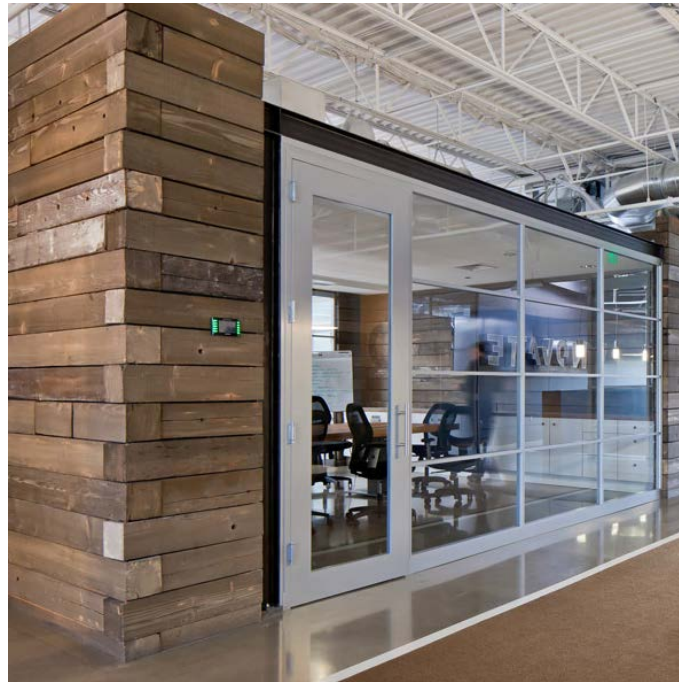
Proposed Tour Stop 3



McKinstry Innovation Center
Seattle, Washington



Proposed Tour Stop 3



McKinstry Innovation Center
Seattle, Washington

Proposed Tour Stop 4

15TH AVENUE SOUTH

SCHOOL OF ARTS
AND HUMANITIES

HEALTH, ENVIRONMENT
AND LIFE ACADEMY

INFOTECH
ACADEMY

SCHOOL FOR
GLOBAL STUDIES

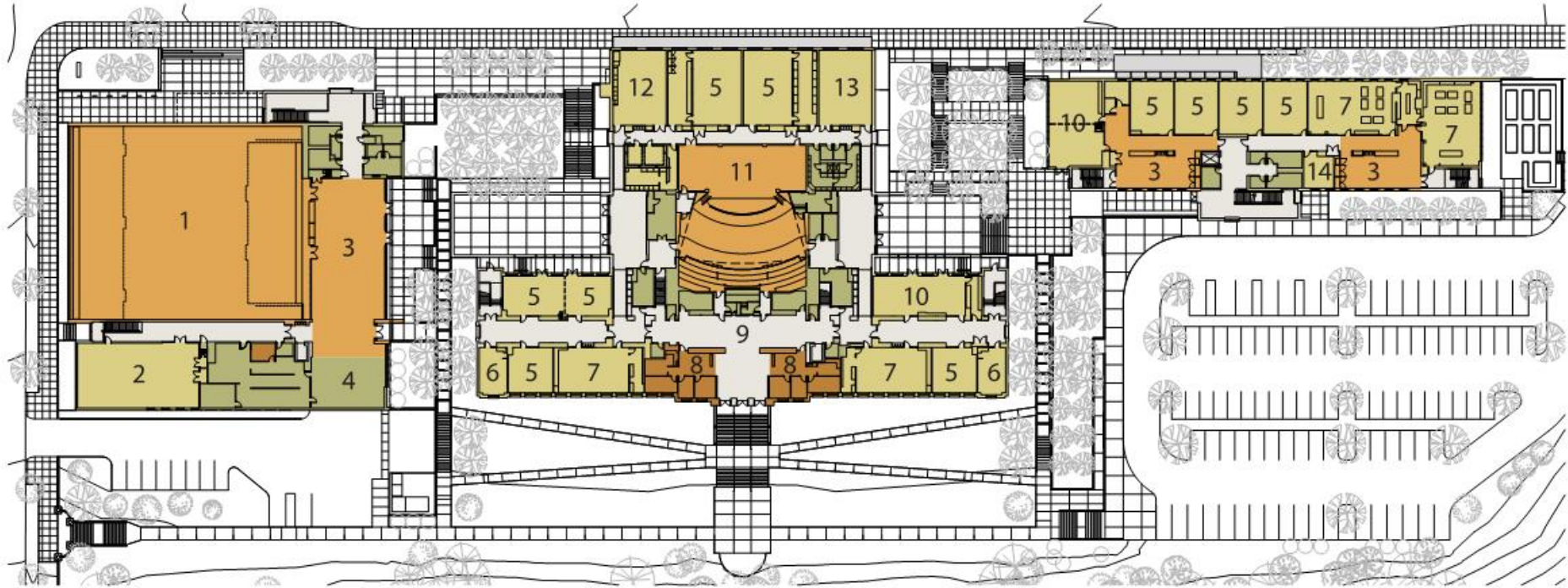
S. LUCILE STREET

Cleveland High School
Seattle Public Schools



10-1-1

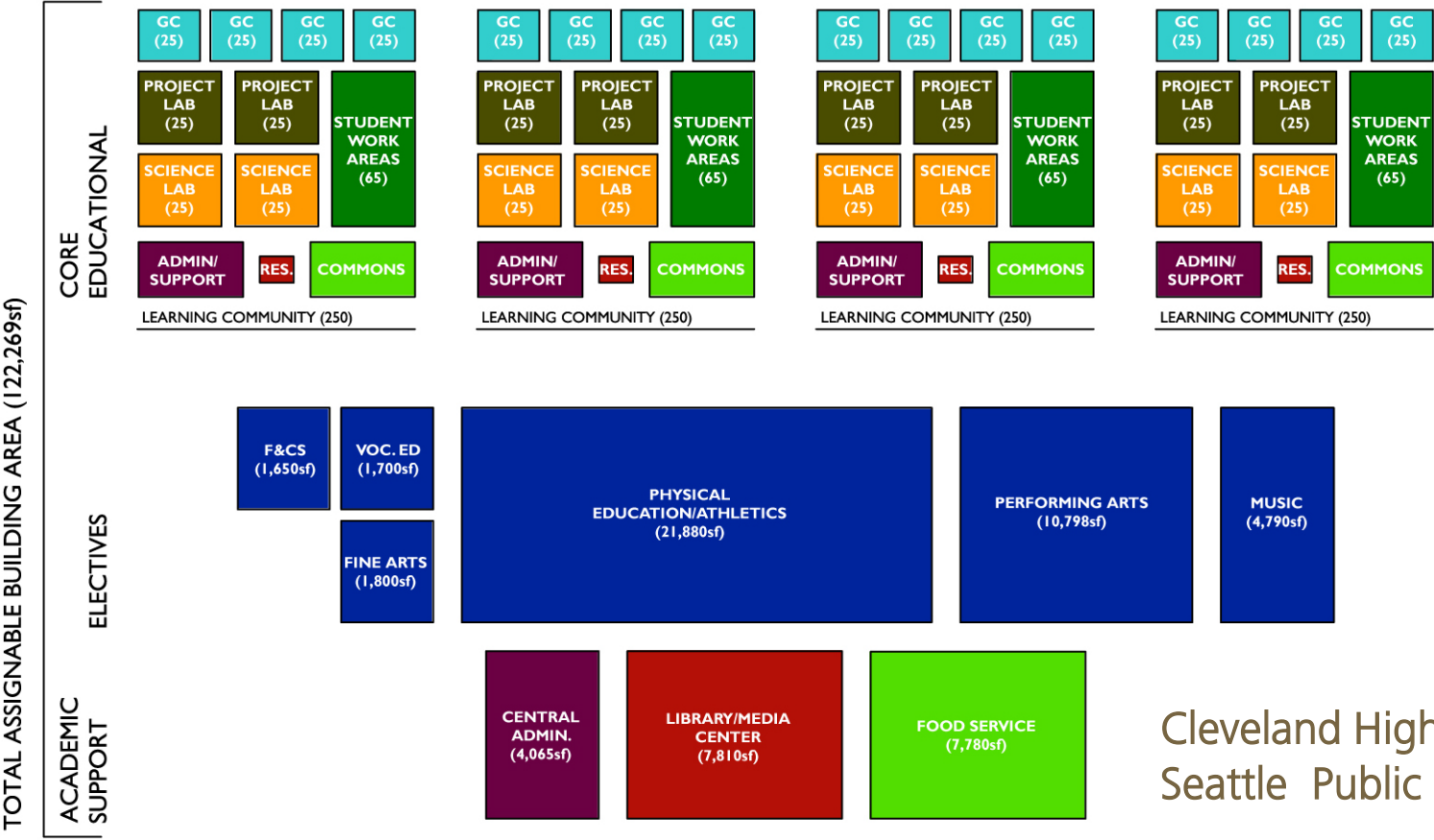
Proposed Tour Stop 4



Cleveland High School
Seattle Public Schools

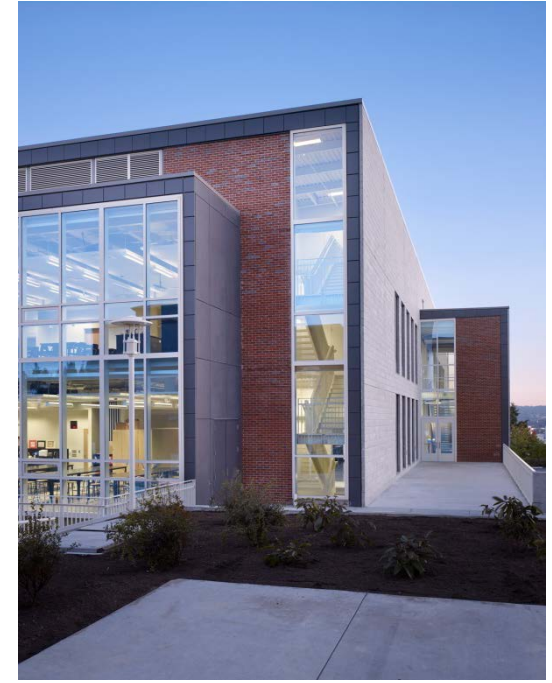
- | | | |
|---------------|------------------|------------|
| 1 GYMNASIUM | 6 FACULTY ROOM | 11 STAGE |
| 2 WEIGHT ROOM | 7 SCIENCE | 12 MUSIC |
| 3 COMMONS | 8 ADMINISTRATION | 13 DRAMA |
| 4 SERVERY | 9 FOYER | 14 SEMINAR |
| 5 CLASSROOM | 10 PROJECT LAB | |

Proposed Tour Stop 4



Cleveland High School
Seattle Public Schools

Proposed Tour Stop 4



Cleveland High School
Seattle Public Schools

Proposed Tour Stop 4



Cleveland High School
Seattle Public Schools

Proposed Tour Stop 4



Cleveland High School
Seattle Public Schools



Proposed Tour Stop 5

Aviation High School
Seattle, Washington



Proposed Tour Stop 5



Aviation High School
Seattle, Washington



Proposed Tour Stop 5



Aviation High School
Seattle, Washington

Proposed Tour Stop 5



Aviation High School
Seattle, Washington

Proposed Tour Stop 5



Aviation High School
Seattle, Washington

Proposed Tour Stop 6

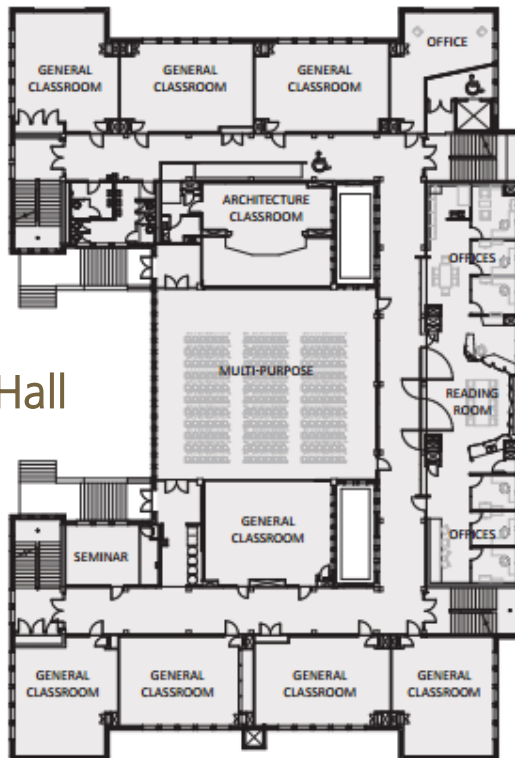


First Floor Construction Plan

- Originally built in 1914 as an elementary school
- LEED NC Gold
- Largest installation on west coast of radiant heating and cooling ceiling panels



Third Floor Demolition Plan



Second Floor Construction Plan



Third Floor Construction Plan

Portland State University-Shattuck Hall
Portland, Oregon

Proposed Tour Stop 6



Portland State University-Shattuck Hall
Portland, Oregon

Proposed Tour Stop 6



Portland State University-Shattuck Hall
Portland, Oregon

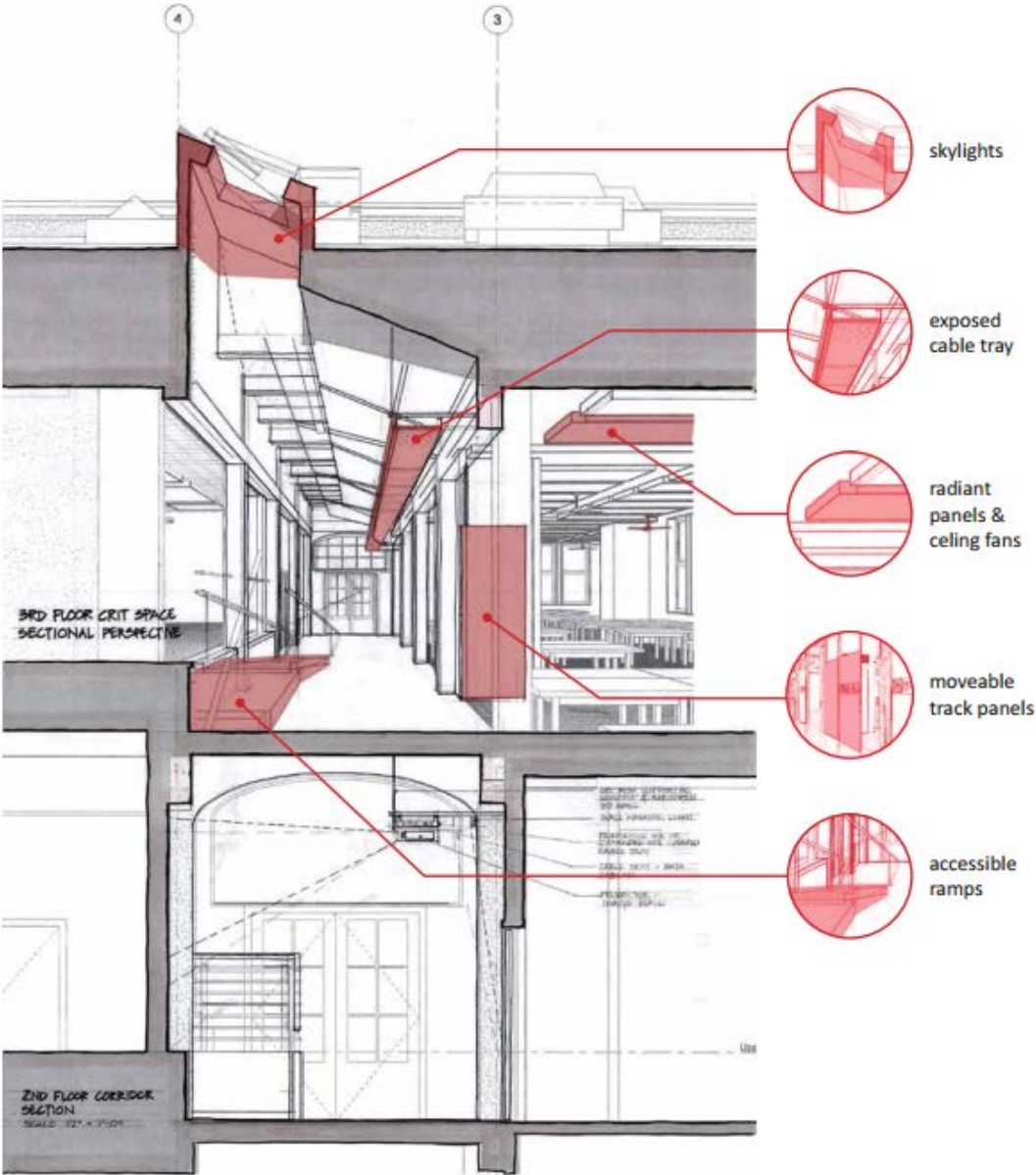


- Refurbished operable windows
- Refurbished light wells
- Daylight & occupancy sensors throughout

Proposed Tour Stop 6



Portland State University-Shattuck Hall
Portland, Oregon



Proposed Tour Stop 6



Above: Corridor prior to renovation
right: Post-renovation



Portland State University
Shattuck Hall
Portland, Oregon

Proposed Tour Stop 6

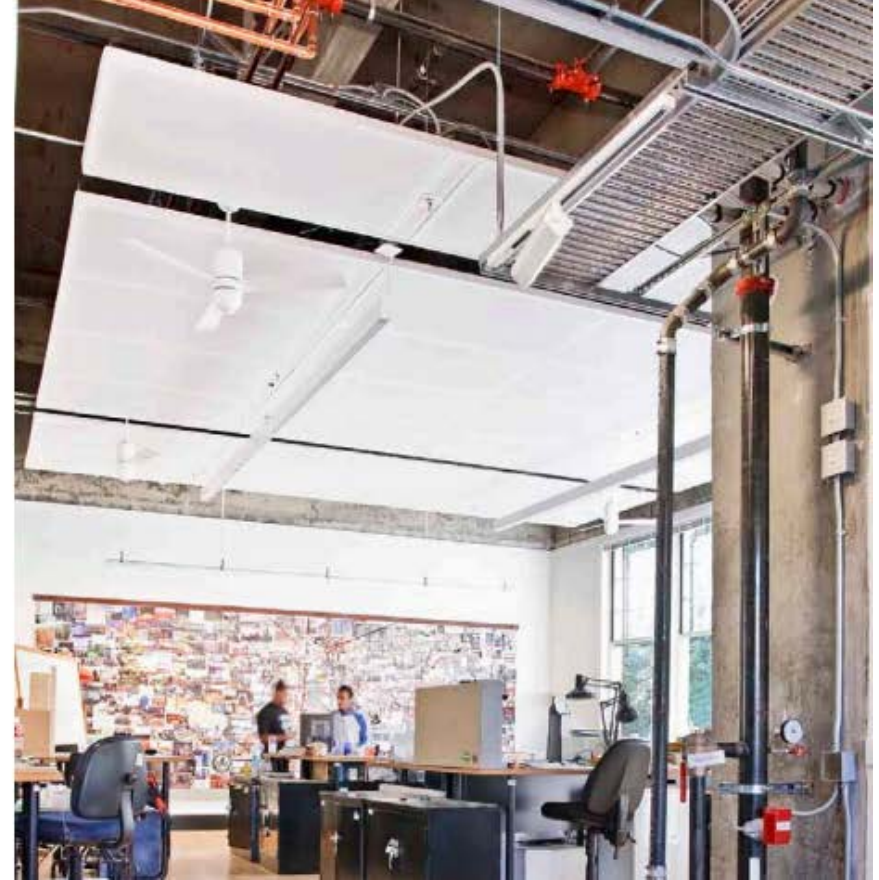


Above: Corridor prior to renovation
Right: Post-renovation



Portland State University
Shattuck Hall
Portland, Oregon

Proposed Tour Stop 6

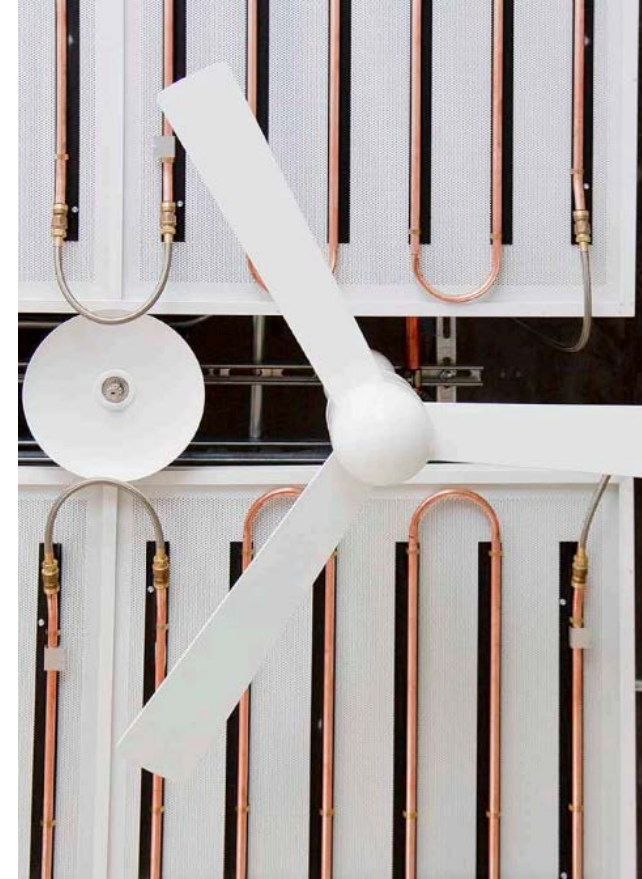


Portland State University-Shattuck Hall
Portland, Oregon

Proposed Tour Stop 6



Portland State University-Shattuck Hall
Portland, Oregon



Proposed Tour Stop 6



Portland State University-Shattuck Hall
Portland, Oregon

- 6,000 SF Materials Lab- model & wood shop
- Digital production space- laser cutter, 3D printer, CNC router
- Digital Graphics Lab
- Photo Studio- lights, backdrops, camera equipment

Visual Listening: Spaces for Learning



You are a student...



- :: What spaces would inspire you to learn?
- :: What spaces do you gravitate towards?
- :: What spaces make you feel comfortable?



- :: What spaces make you feel uncomfortable?
- :: What spaces make you anxious?
- :: What spaces would you avoid?

Educational Specifications: Questions



Your Questions (so far)

- :: How will Schematic Design sync up with the most appropriate groupings of teachers?
- :: What are the opportunities for teachers to collaborate?
- :: How do the planning principles get applied to the existing building?
- :: What was the Ed Spec approach for the other two buildings (Franklin & Roosevelt), especially CTE?
- :: What changed in the new version of the Ed Spec from previous version?
- :: What opportunities are available to increase the footprint?
- :: How does the process move from conceptual design (masterplanning) to schematic design?

Educational Specifications: Introduction to Programs at Grant



Grant: Current Core Program

Teaching Stations

	QTY	SF
General Education Teaching Stations	48	39,200
Science Labs	12	13,832
Fine & Performing Arts	7	10,268
Career Preparation / CTE	7	5,619
Athletics	4	24,464
SPED, Life Skills, & ELL	7	7,537
Smaller Instructional Spaces	0	0
	84	100,920



Ed Spec: Core Program

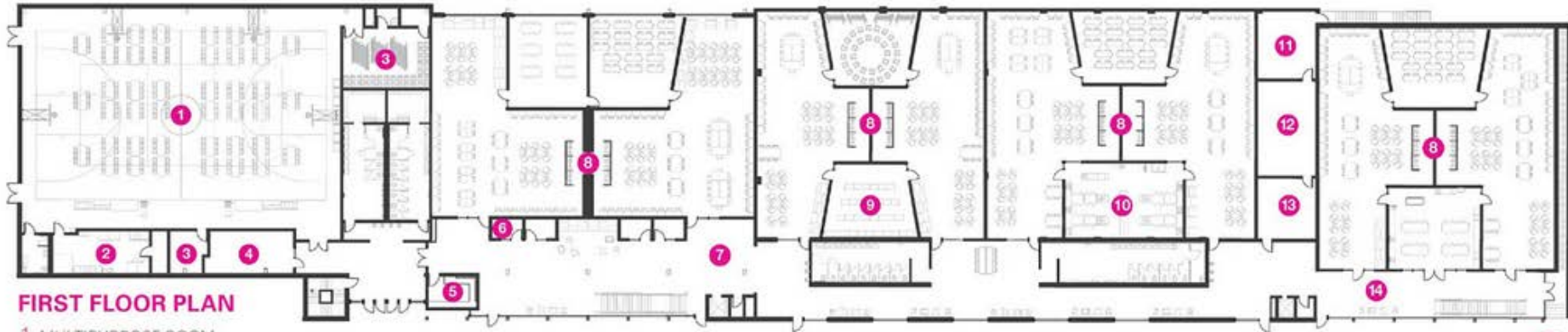
Teaching Stations

General Education Teaching Stations
 Science Labs
 Fine & Performing Arts
 Career Preparation / CTE
 Athletics
 SPED, Life Skills, & ELL
 Smaller Instructional Spaces

QTY	SF
41	40,180
11	16,500
4	21,350
3	6,000
3	35,580
4	6,800
10	5,000
74	131,410



Virtual Tour-



FIRST FLOOR PLAN

- 1 MULTIPURPOSE ROOM
- 2 WARMING KITCHEN

- 3 STORAGE
- 4 LEARNING LAB
- 5 RECEPTION
- 6 HUDDLE ROOM
- 7 NORTH ATRIUM
- 8 GRADE LEVEL PODS
- 9 DIGITAL LAB
- 10 CHEMISTRY LAB
- 11 MECHANICAL ROOM
- 12 ELECTRICAL ROOM
- 13 STAFF ROOM
- 14 SOUTH ATRIUM

Intrinsic School
Chicago, IL



Virtual Tour-



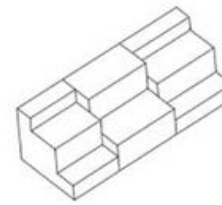
Intrinsic School
Chicago, IL



Virtual Tour-

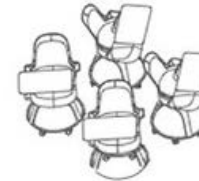


Intrinsic School Chicago, IL



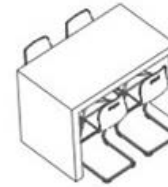
STUDY LOUNGE

These soft seating risers are used as an alternative learning location for students during independent study periods.



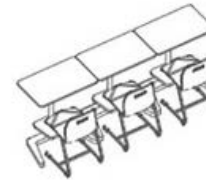
POP-UP CLASS

Prompted by real time metrics, an instructor can gather up to 10 students struggling with the same concept and mediate understanding with an impromptu direct-instruction session around an interactive whiteboard.



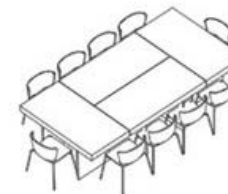
GENIUS BAR

Typically attended by one instructor, this primary supervision location also serves as a place where any student can seek counsel.



COASTLINE

As the most introspective space in the pod, the Coastline affords students a place to focus on personalized learning, primarily mediated through digitally delivered video and audio on Chromebooks outfitted with earbuds. On the Coastline, each student learns at their own velocity, achieving mastery of foundational concepts before tackling more ambitious ones.



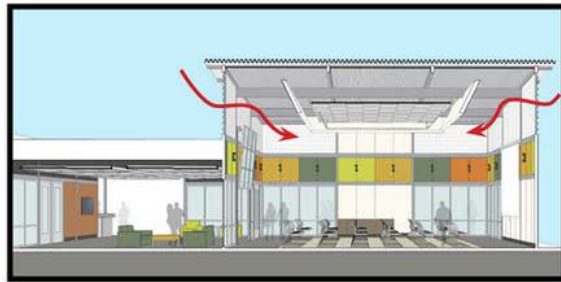
X-TABLES / EXCHANGE TABLES

As the home of collaborative learning, this is the place where students actively engage with one another, making connections and elaborating on topics to achieve a deeper and more durable understanding. A light fixture with an oversized shade hovers over the tables, serving both as a landmark and an acoustical absorber.

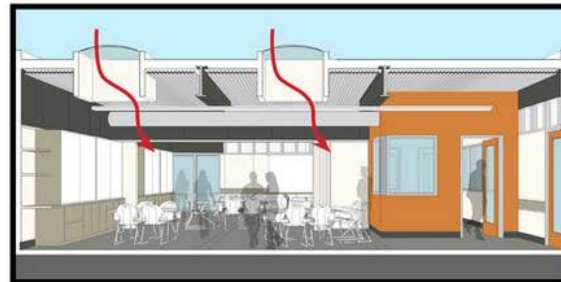




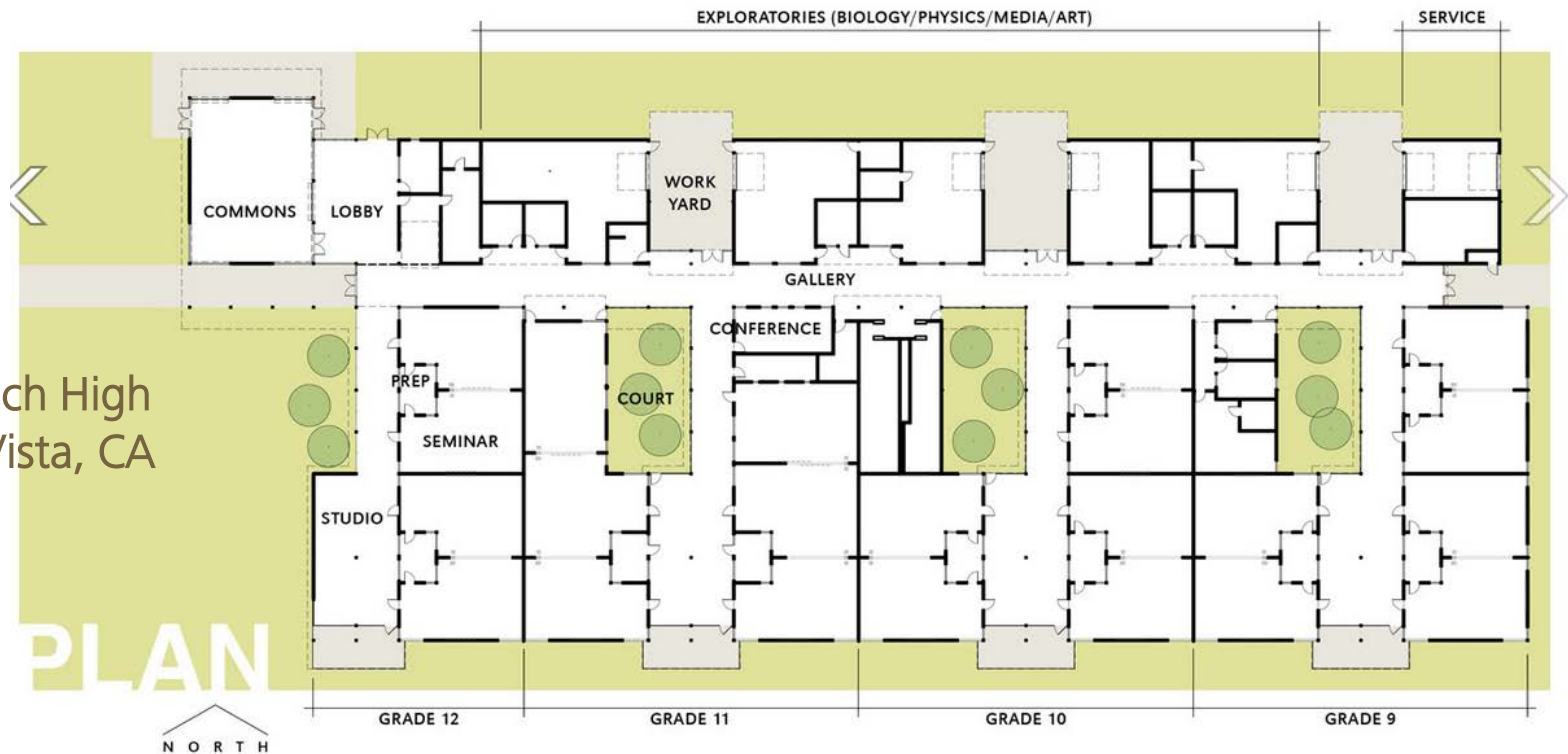
Virtual Tour



COMMONS



CLASSROOM



High Tech High
Chula Vista, CA



Virtual Tour-



Kiowa County School
Greensburg, KS



LEED Platinum

Virtual Tour- STEM Labs



Niles West/North High Schools
Skokie, Illinois



3000 SF labs dividing into “think tank” for presentations and “flex lab” for research & experiments





Grant: Current Core Program

General Education

	QTY	SF EACH	SF TOTAL
English	15	780	11,700
Math	11	690	7,590
Social Studies	9	722	6,498
Health	2	925	1,850
World Language	8	724	5,792
Electives	4	varies	5,305
	49		39,200



Ed Spec: Core Program

General Education

	QTY	SF EACH	SF TOTAL
English	11	980	10,780
Math	8	980	7,840
Social Studies	8	980	7,840
Health	2	980	1,960
World Language	6	980	5,880
Electives	6	980	5,880
	41		40,180



Virtual Tour- Classroom Clusters



 TheThirdTeacher⁺
by CANNON DESIGN



Grant: Current Program

16 Career Clusters & 79 Career Pathways

Architecture & Construction

Design & Pre-construction

Arts, AV Tech & Communications

AV Tech & Film (Elective)

Journalism & Broadcasting (GMagazine Elective)

Performing Arts (CTE)

Printing Technology (CTE)

Visual Arts (3D CTE, 2D Elective)

Finance

Accounting (Elective)

Business Finance (Elective)

Health Science

Diagnostic Services

(Intro Biomed & Intro Physiology)

Information Technology

Programming & Software Development

(Intro to Computer Sciences 1 & 2)

Web & Digital Communications

(Graphic Design, Yearbook- Electives)

Marketing

Communications, Management,
Professional Sales (Electives)

STEAM

Engineering & Technology

(Intro Engineering 1 & 2)

Robotics (CTE)



Grant: Current Program

Career Technical Education (CTE)

	QTY	SF	
Digital Media	1	1,225	
Robotics	1	925	
Audio Engineering	1	0	(Shared w. Digital Media)
Intro to Engineering	1	2,575	(the Makerspace)
Intro Computer Science	1	894	
		<hr/>	
	5	5,619	



Ed Spec: Program

Career Technical Education (CTE)

	QTY	SF EACH	SF TOTAL
Classrooms	TBD per site		
Specialized classrooms/labs	TBD per site	4,800	4,800
Makerspace	1	1,200	1,200
			6,000



Career Preparation/Career Technical Education

Ed Spec Language

Grant: Current Programs

Photography Darkroom *
Photography *
Music Classroom (Choir)
Multimedia | Web Design | Film *
Digital Media*
Marketing *
Accounting (Shared with Marketing)
Robotics
Computer Science
Intro Engineering

Grant: Future Programs

Design/Construction
Health Services
Future Educators
Architectural Drawing
Engineering



Grant: Current Program

Electives

	QTY	SF TOTAL
Grant Magazine	1	805
Student Leadership (See Education Support)	0	0
Graphic Design	2	1,400
Business Finance (Shared w. Graphic Design)	0	0
Accounting (Shared w. Graphic Design)	0	0
Yearbook (Shared w. Graphic Design)	0	0
Photography	1	919
Darkroom	1	290
Marketing	2	1,700

7 5,114



Ed Spec: Program

Electives

Electives

QTY
6

SF
980

5,880

5,880



Program

CTE + Electives

Current Grant

Ed Spec

QTY

SF TOTAL

12

10,733

x

11,880



Virtual Tour- Career Technical Education



Blue Valley Center for Advanced Professional Studies
Overland Park, Kansas



Virtual Tour- Career Technical Education



Blue Valley Center for Advanced Professional Studies
Overland Park, Kansas



Virtual Tour- STEAM



High Tech High
Chula Vista, CA



Virtual Tour- STEAM



High Tech High
Chula Vista, CA



Science, Technology, Engineering, Art, Math (STEAM)

Grant: Current Programs

Science - AP Physics

Math - AP Calculus

Intro to Engineering

Health Sciences | Biomedical (with PSU)

Anatomy

AP Chemistry

AP Environmental Science

Ed Spec: Future Programs

Computer lab with 3D printer

Small group work space

Project Display

Engineering & Design/Construction

STEAM Lab

Ed Spec: Optional STEAM Programs

Lecture Hall

AP Physiology

Alternative Energy

Sports Medicine

STEM Lab - biotechnology

Small Engines Lab

Electronic Trades

Mechanic

Sustainable Transportation

Information Technology Studies

Software Engineering

Web and Digital Communications Lab



Grant: Current Program

Extended Learning

Extended Learning

QTY
0

SF
0

TOTAL
0



Ed Spec: Future Program

Extended Learning

Extended Learning

QTY
8

SF
1,000

SF TOTAL
8,000

8,000

Virtual Tour- Shared Spaces



North Shore Country Day School
Winnetka, Illinois

Virtual Tour- Shared Spaces



North Shore Country Day School
Winnetka, Illinois



Virtual Tour- Small Groups



Alexandria Area High School
Alexandria, MN



Virtual Tour- Shared Learning



Marysville Getchell High School
Marysville, WA



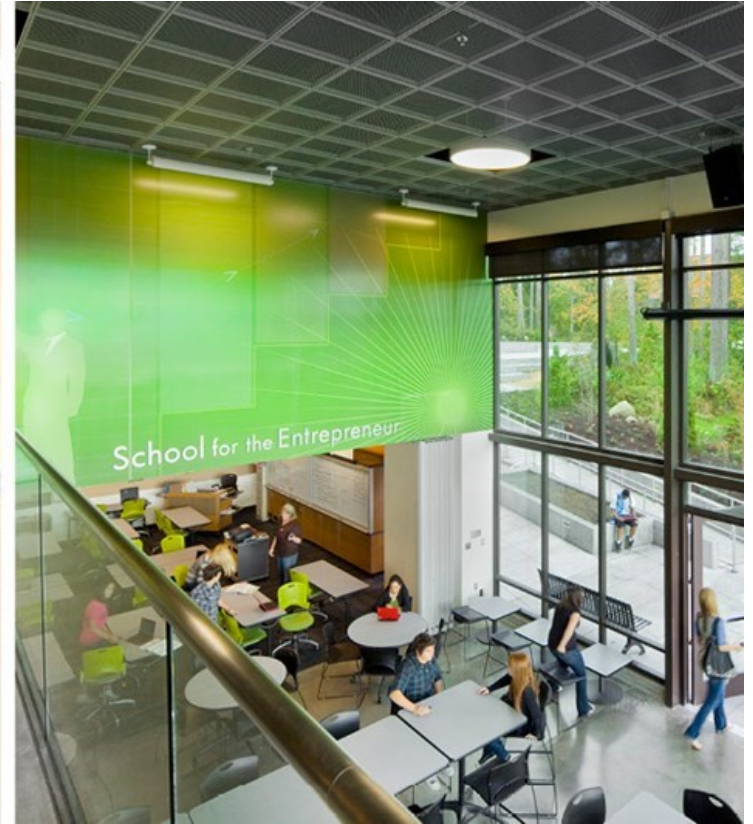
Virtual Tour- Shared Learning



Marysville Getchell High School
Marysville, WA



Virtual Tour- Shared Learning



Marysville Getchell High School
Marysville, WA



Virtual Tour- Shared Learning



Marysville Getchell High School
Marysville, WA



Grant: Current Program

Fine & Performing Arts

	QTY	SF
Art Foundations (Art 2D)	1	1,841
AP Studio Art (Art 2D)	1	1,017
Printmaking (Art 2D)	1	1,026
Ceramics (Art 3D)	1	1,634
Band (Shared w. Orchestra)	1	1,465
Choir	1	1,930
Technical Theater	1	1,355
Dance (See Athletics)	0	0
Audio Engineering (See CTE)	0	0
Digital Media / Photo (See CTE)	0	0
	7	10,268



Ed Spec: Program

Fine & Performing Arts

Art Room (2D)

QTY

SF

1

1,200

Art Room (3D)

1

1,500

Band Room

1

2,200

Choir Room

1 Optional

1,500

Drama Classroom/Blackbox

1

1,600

4

8,000



Grant: Current Program

Fine & Performing Arts

1500 Seat Theater

Stage

Orchestra Pit

QTY

1

1

0

SF

11,948

1,505

0

13,454



Ed Spec: Program

Fine & Performing Arts

500 Seat Theater
Stage
Orchestra Pit

QTY

1

1

1

3

SF

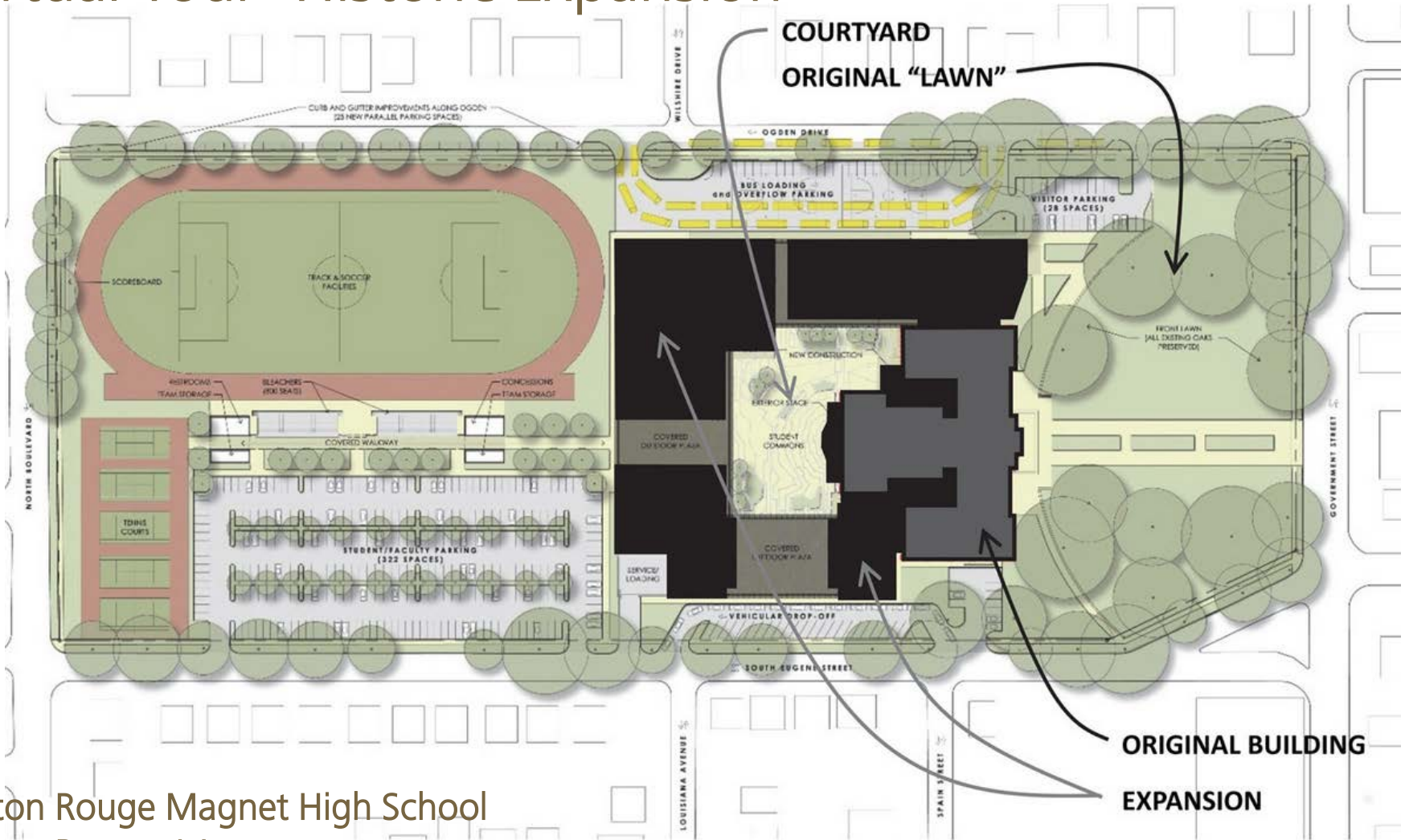
5,000

3,500

500

9,000

Virtual Tour- Historic Expansion



Baton Rouge Magnet High School
Baton Rouge, LA



Virtual Tour- Performing Arts



Baton Rouge Magnet High School
Baton Rouge, LA



Grant: Current Program

Athletics- Teaching Stations

	QTY	SF
Gymnasium	1	11,771
Old Gym	1	6,211
Weight Room	1	3,286
Dance	1	2,271
Aerobics / Spinning	1	925

24,464



Ed Spec: Program

Athletics- Teaching Stations

	QTY	SF
Gymnasium (two teaching stations)	1	13,000
Auxiliary Gym	1	5,700
Mat/Wrestling/Dance	1	2,750
Weight Room/Aerobics/Spinning	1	2,500

23,950



Virtual Tour- Athletics



Cleveland High School
Seattle, WA



Grant: Current Program

Education Support

	QTY	SF EA.	SF TOTAL
Administration			2,313
Teacher Offices	0	0	0
Counseling & Career			3,027
Student Activities (Athletic Staff)			507
Technology Access (Computer Labs) 1		742	742
Student Center (Cafeteria Commons)			12,009
Media Center (Library)			8,396
Student Space (Student Leadership)			487
Custodial Staff			4,085

31,566



Ed Spec: Program

Education Support

	QTY	SF EA.	SF TOTAL
Administration			5,460
Teacher's Offices	10	980	9,800
Counseling & Career			2,735
Student Activities (Athletic Staff)			270
Technology Access (Computer Labs)			5,500
Student Center (Cafeteria Commons)			12,620
Media Center (Library)			10,220
Student Space (Student Government)			200
Custodial Staff			3,850

50,655



Virtual Tour- Dining



Alexandria Area High School
Alexandria, MN



Virtual Tour- Dining



Branson School Student Commons
Ross, CA



Spatial Relationships: Pizza Exercise



Understanding Adjacencies

- :: What are the programs that matter to you?
- :: What programs have affinity?

What We Learned: Site Assessment



DAG

:: Identify the places that the **community values**

“huge memories on the track/football field”

“connective spaces for the community”

“community garden”

“lights and bleachers”

“front approach”

“an updated pool”

“large hallways”

“façade”

“theater but not the chairs or stage”

“the old gym is important to repurpose”

“auditorium and library bring the community together”

“soccer practice open space in front”

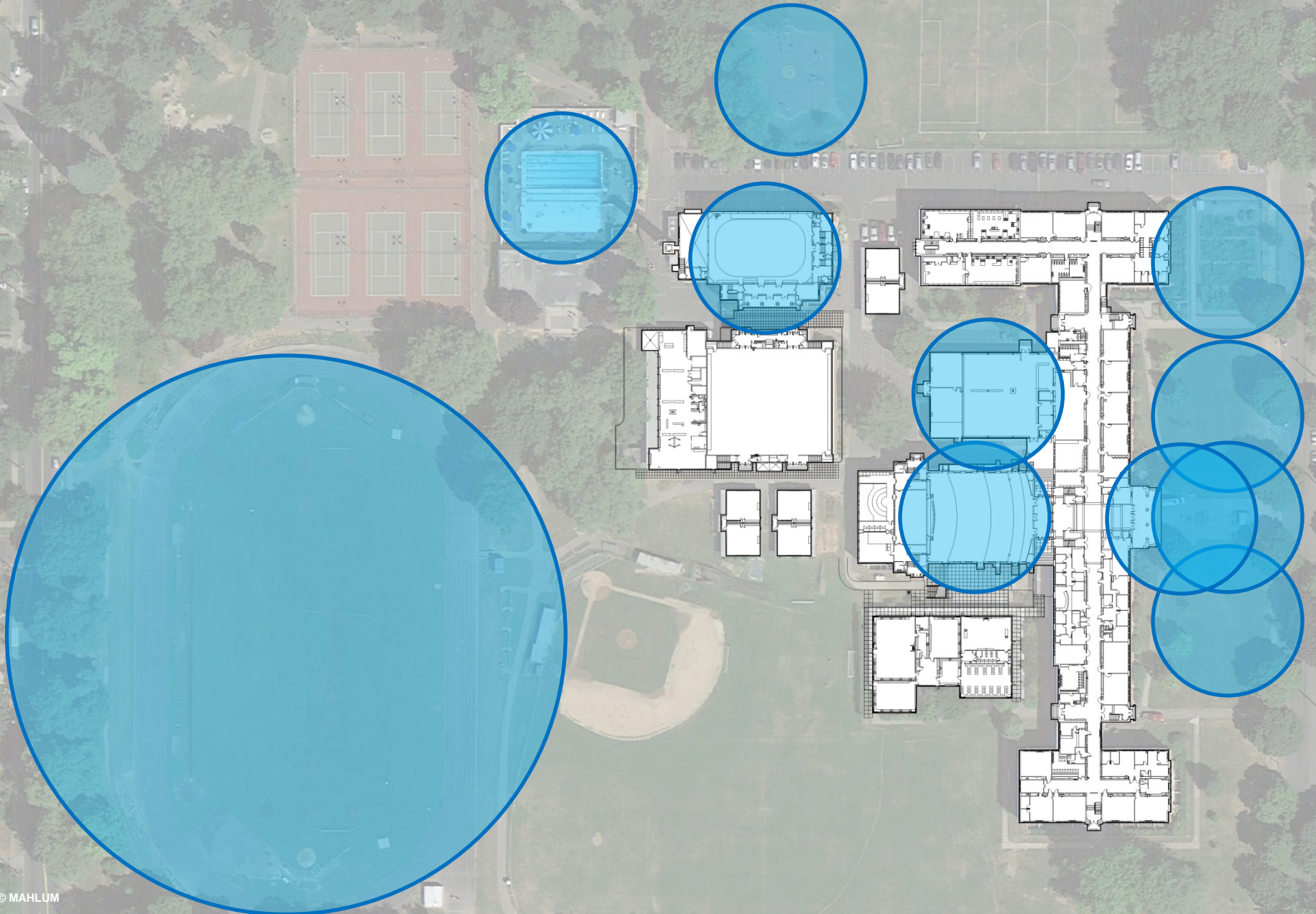
“love the look of the auditorium, hate everything else”

“the indoor track in the old gym”

“choir room”

“outdoor gathering spaces”

:: Identify the places that the **community values**





STAKEHOLDERS

:: Identify the places that the **community values**

Auditorium

The “bowl” – football field

The garden

Choir Room

Foyer/lobby

Old library

Center hall

Cafeteria annex

Bungalows

The park

Concerts

Soccer field

Library- poetry slam

The “porch” entrance



DAG

:: Identify places of **memory** or historic events

"religious protest on the front sidewalk"

"playoffs"

"community events, symphony and sports in the park"

"championship games in the gym"

"choir room"

"gathering focal point, visible entry, community space"

"stairways"

"public events in the auditorium"

"old team pictures in hallway"

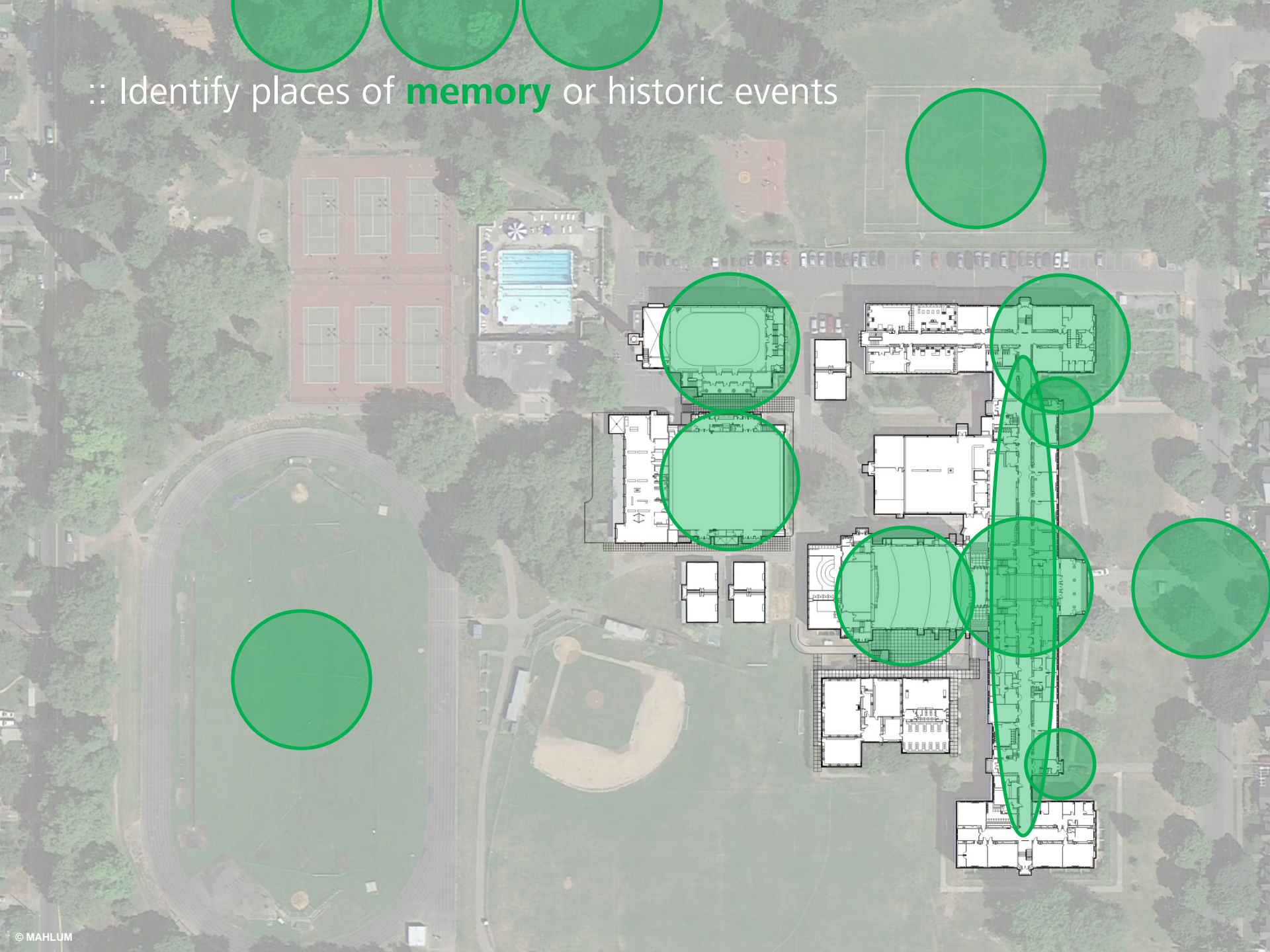
"wood banisters"

"the strip" (main hallway)

"stairway hangouts"

"choir room"

:: Identify places of **memory** or historic events





STAKEHOLDERS

:: Identify places of **memory** or historic events

“Historic photos in the hallway, the principal photos in the library”

“The old library classrooms, auditorium”

“My classroom- I’m able to maximize it and customize it”

“‘The bowl’ – football field, people go back because the space is inviting”

“Pep assemblies”

“Auditorium- fabulous productions”



DAG

:: What is your most **beloved** place and why?

“choir room”

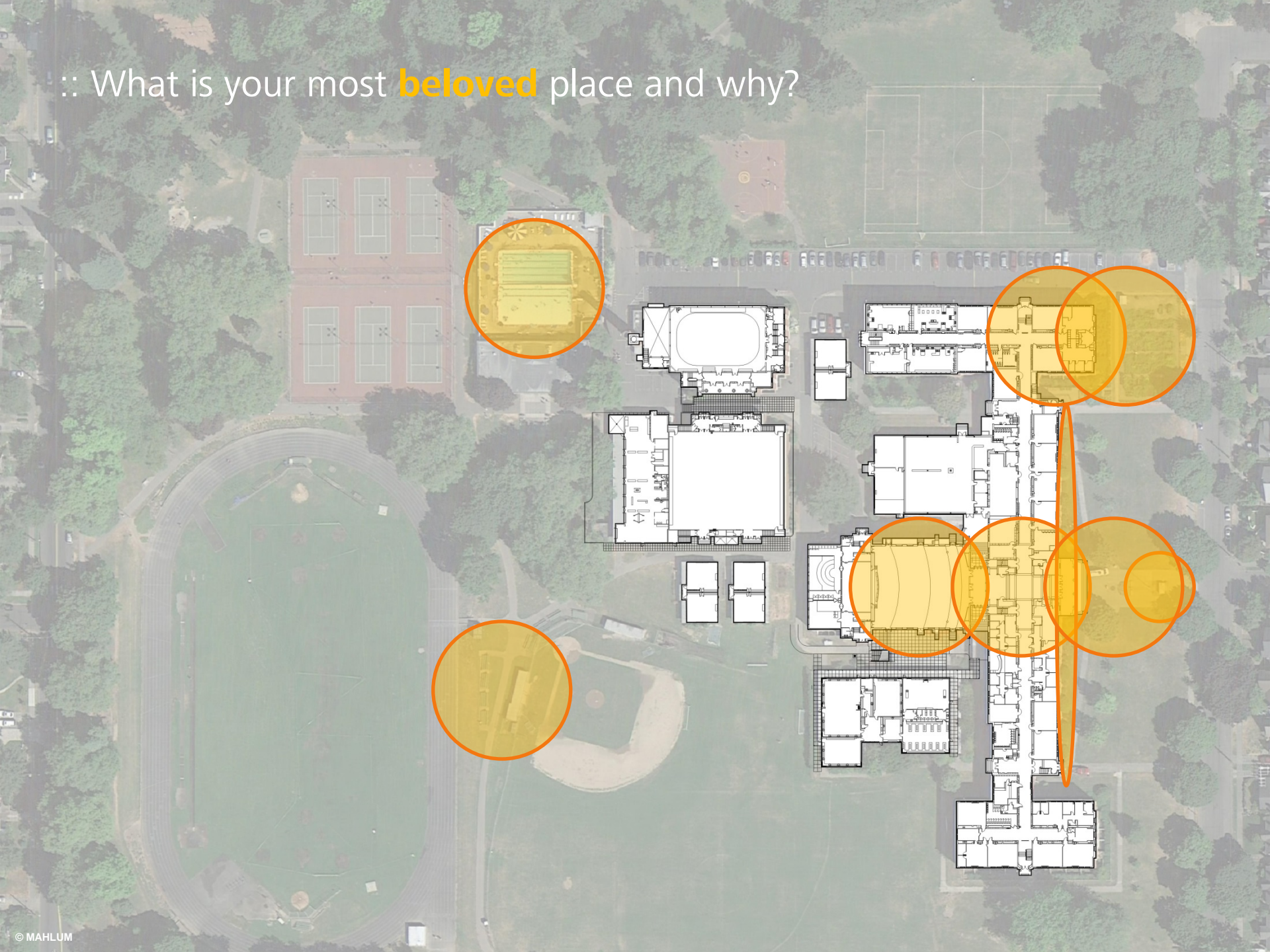
“Grant Magazine”

“games in the gym”

“athletics”

“community & sports”

:: What is your most **beloved** place and why?





STAKEHOLDERS

:: What is your most **beloved** place and why?

“The **center hall** – it is where field trips are, principals are, and people come and go”

“Choir room – it is the place where I **figured out** what I wanted to do for the rest of my life. And now I am **lucky** enough to work in the same place.”

“The art classroom to **relax** because the paints are great to look at”

“The gyms, more than just the gyms though, all the places that make the **health** and athletic department”

“My classroom”

“The left side of the library for the stage – events with published authors and guest speakers come to perform there. Also, the place btwn the main bldg & the science bldg where is it like a mini forest – like **Narnia**”



DAG

:: Where is **change** necessary?

“can we incorporate the park to the north in our plan and negotiate with parks and rec?”

“bigger parking lot”

“delete portables”

“better classroom technology”

“change science wing”

“bathrooms everywhere”

“change cafeteria”

“more elevators”

“dark and gloomy north wing addition”

“gym needs an upgrade” modernize the gym”

“get rid of science wing”

“change entrances to the gyms”

“seating, acoustics, lighting, backstage, and stage of theater”

“bathrooms!”

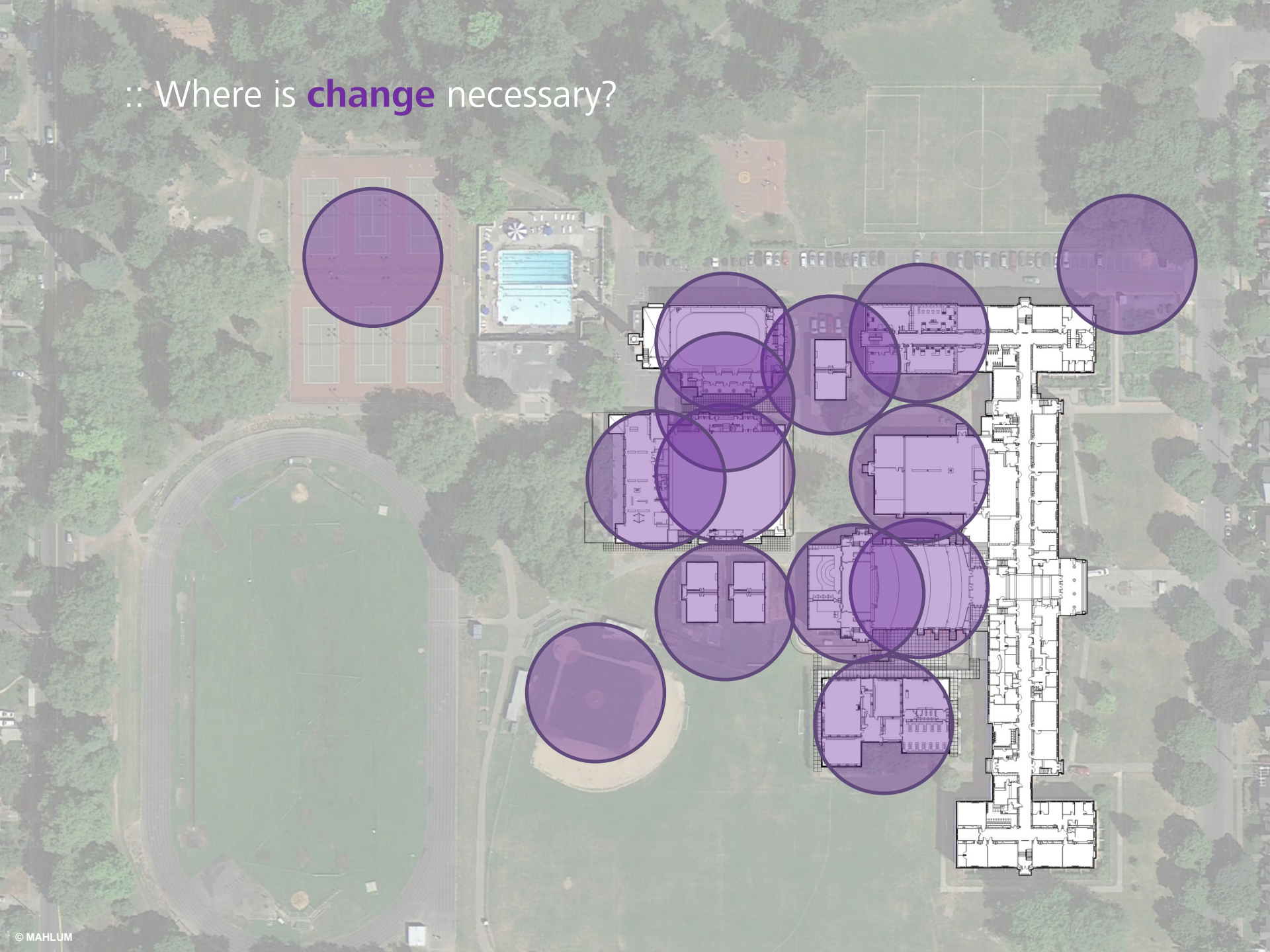
“underutilized outdoor space by library”

“ugly parking”

“need bike parking”

“café out of basement”

:: Where is **change** necessary?





STAKEHOLDERS

:: Where is **change** necessary?

“Temperature control, plumbing, efficiency”

“Basic look and feel of the classroom - rooms are too small, teacher lounge, bathrooms”

“air quality, light quality is archaic, some flexible spaces”

“Cafeteria. The also people thinking the library is a hangout place while getting stuff done. **All-inclusive bathrooms** for everyone – ADA, LBGT. **Changing station** for bikers.”

“Love the building as is, just needs re-wiring, restore rather than change, **update technology.**”

“if there is a basement it needs to be **connected**, classes bigger for flexibility, a bigger parking lot”

“Throughout the building – structurally, enable us to utilize space better and feel safe for all kids – ADA, LGBT. Revamp **basement** to bring Grant to modern standards”

Spectrums: Understanding Different Perspectives

Next Steps:

Tours

Goal Setting

Adjacencies



Parking Lot

:: Virtual Tours for stakeholders

- Other planning work
- Public access via web

:: Date CMGC is on board

:: Make slides more visible for people in back or make slides available to follow along.

:: VE Process discussion

:: What is a “social house”? (from stakeholder)

:: Address “parking lot” at end of meeting rather than beginning

:: Reed College tour?

Public Comment (10 min)